

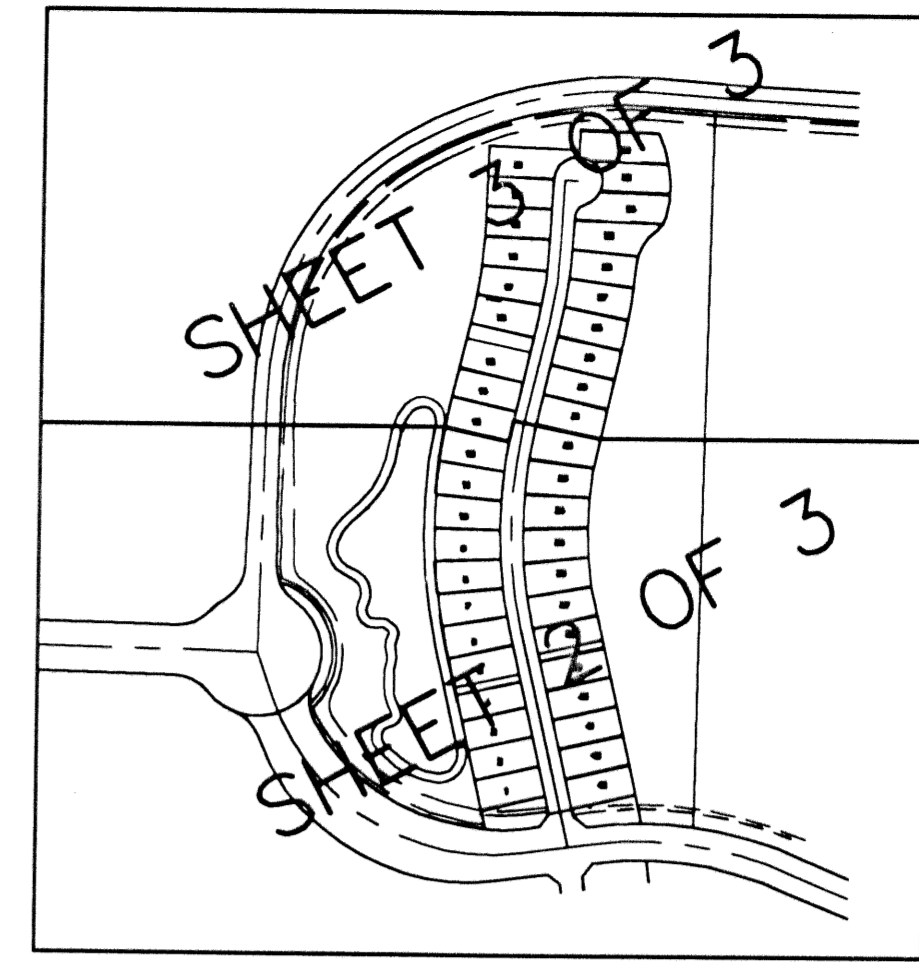


FRENCHMAN'S RESERVE PCD - PLAT "A"

BEING A REPLAT OF TRACT A, FRENCHMAN'S RESERVE PCD - PLAT ONE
AS RECORDED IN PLAT BOOK 92, PAGE 11-20,
PALM BEACH COUNTY, FLORIDA

LYING IN SECTIONS 31,
TOWNSHIP 41 SOUTH, RANGE 43 EAST, CITY OF PALM BEACH
GARDENS PALM BEACH COUNTY, FLORIDA.

NOVEMBER, 2001 SHEET 3 OF 3

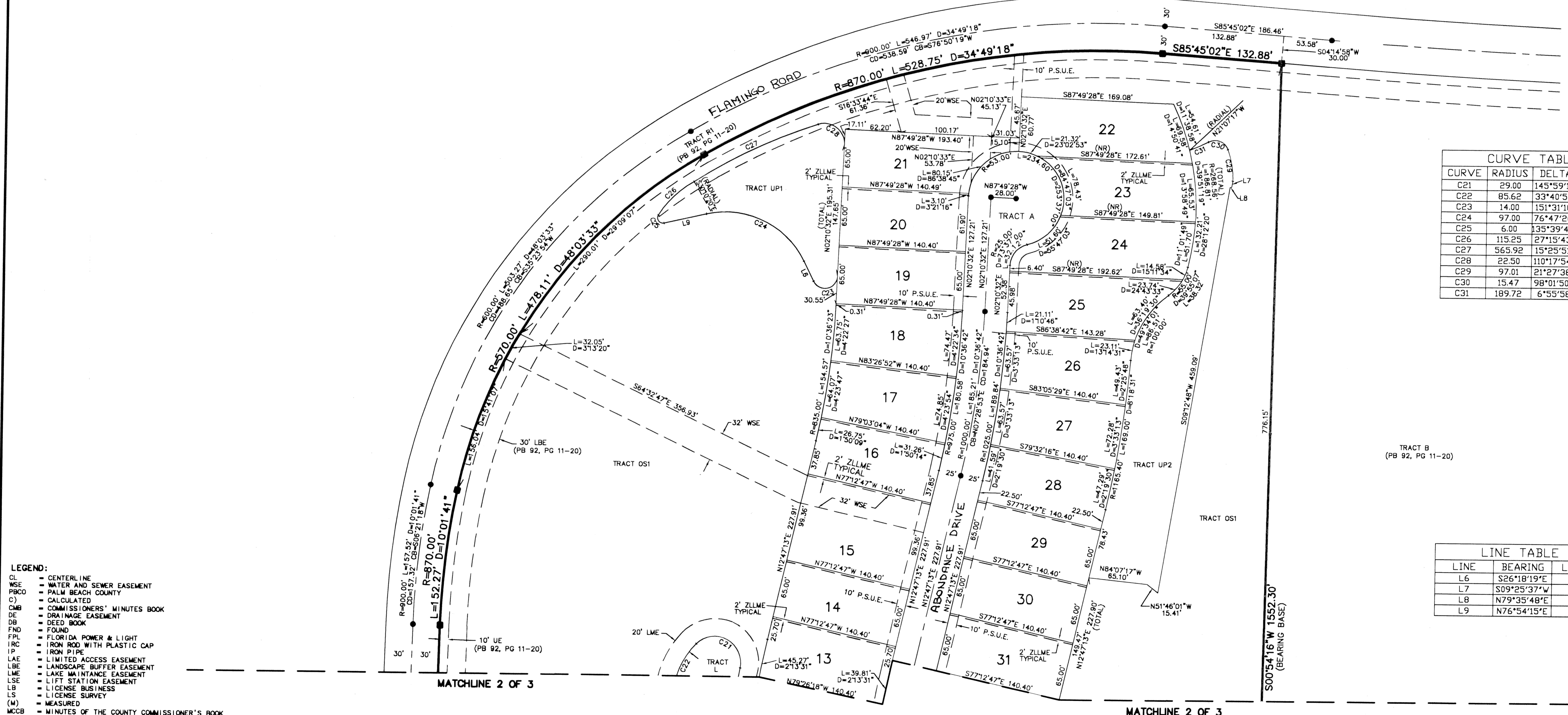


196

STATE OF FLORIDA
COUNTY OF PALM BEACH
THIS PLAT WAS FILED FOR
RECORD AT _____ M.
THIS _____ DAY OF _____
A.D. 2001 AND DULY RECORDED
IN PLAT BOOK _____ ON
PAGES _____ AND _____

DOROTHY H. WILKEN
CLERK CIRCUIT COURT

BY: _____
DEPUTY CLERK



CURVE TABLE			
CURVE	RADIUS	DELTA	LENGTH
C21	29.00	145°59'18"	73.89
C22	85.62	33°40'50"	50.33
C23	14.00	151°31'10"	37.02
C24	97.00	76°47'26"	130.00
C25	6.00	135°39'42"	14.21
C26	115.25	27°15'43"	54.84
C27	565.92	15°25'51"	152.41
C28	22.50	110°17'54"	43.31
C29	97.01	21°27'38"	36.34
C30	15.47	98°01'50"	26.47
C31	189.72	6°55'58"	22.96

LINE TABLE		
LINE	BEARING	LENGTH
L6	S26°18'19"E	24.55
L7	S09°25'37"W	6.89
L8	N79°35'48"E	1.82
L9	N76°54'15"E	48.33

- LEGEND:**
- CL = CENTERLINE
 - WSE = WATER AND SEWER EASEMENT
 - PBCO = PALM BEACH COUNTY
 - C = CALCULATED
 - CMB = COMMISSIONERS' MINUTES BOOK
 - DE = DRAINAGE EASEMENT
 - DB = DEED BOOK
 - FND = FOUND
 - FPL = FLORIDA POWER & LIGHT
 - IRC = IRON ROD WITH PLASTIC CAP
 - IP = IRON PIPE
 - LAE = LIMITED ACCESS EASEMENT
 - LBE = LANDSCAPE BUFFER EASEMENT
 - LME = LAKE MAINTENANCE EASEMENT
 - LSE = LIFT STATION EASEMENT
 - LB = LICENSE BUSINESS
 - LS = LICENSE SURVEY
 - (M) = MEASURED
 - MCCB = MINUTES OF THE COUNTY COMMISSIONER'S BOOK
 - MON = MONUMENT
 - ORB = OFFICIAL RECORD BOOK
 - (P) = PLAT
 - PG = PLAT BOOK
 - PG = PAGE
 - POB = POINT OF BEGINNING
 - POC = POINT OF COMMENCEMENT
 - PRM = PERMANENT REFERENCE MONUMENT
 - R/W = RIGHT-OF-WAY
 - RPB = ROAD PLAT BOOK
 - SUA = SEACOST UTILITY EASEMENT
 - (S) = SURVEY
 - ZLLME = ZERO LOT LINE MAINTENANCE EASEMENT
 - UE = UTILITY EASEMENT
 - = SET PK&DISK "PERMANENT CONTROL POINT"
 - = SET "4x4" CONCRETE MONUMENT
 - = SET "LB#7055"

Wantman Group, Inc.
Engineering ♦ Surveying ♦ Mapping
901 NORTHPOINT PARKWAY, SUITE 204
WEST PALM BEACH, FL 33407
(561) 687-2220 phone (561) 687-1110 fax
CERT No. 6091 - LB No. 7055

CAD	K:\TOLLBROS\FRENCHMAN\DWG\218PLATA		
REF	K:\TOLLBROS\FRENCHMAN\DWG\218MG01		
FLD	RP/AB	FB. 000 PG. 00	JOB 218A
OFF	AJP/MRJ		DATE 7/2/01
CKD	RBP	SHEET 3 OF 3	DWG